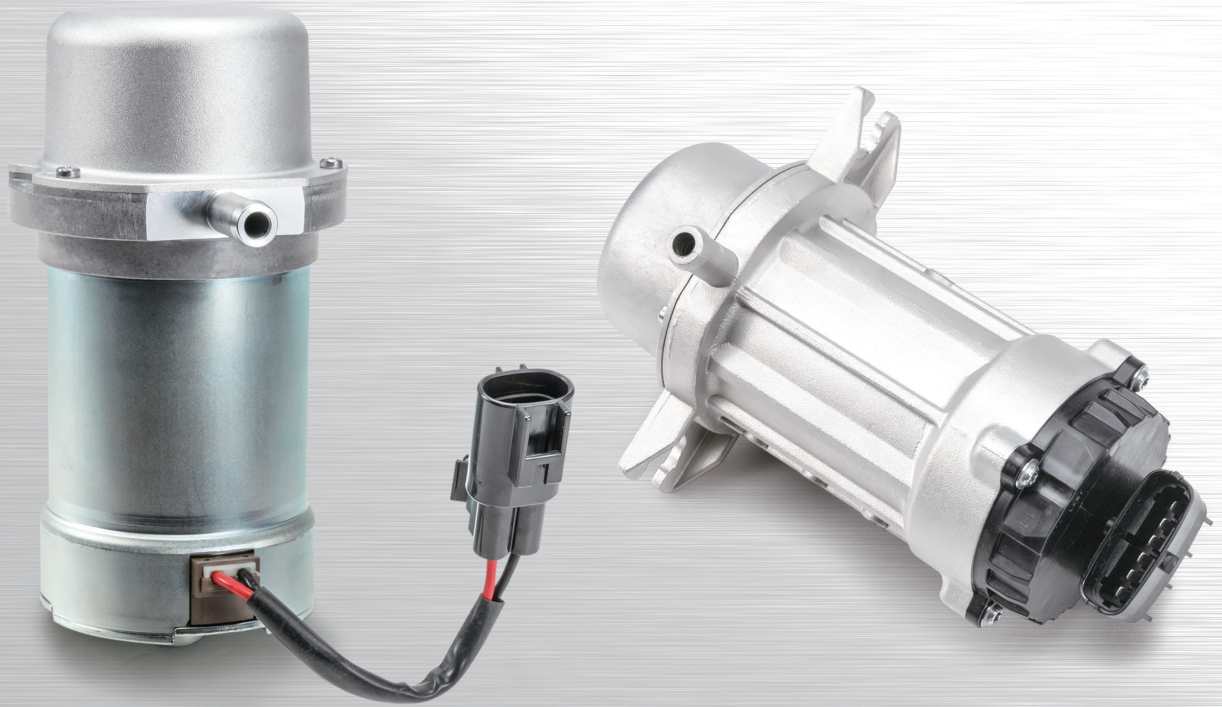


Electric Vacuum Pump



EVP generates a vacuum via rotor & vane directly connected with motor shaft.

EVP supplies a vacuum for the break booster to enhance braking performance of the vehicle and the servo system operating on a source of supply vacuum.

EVP10e is used for secondary vacuum source and EVP 20n is used for main vacuum source.

FEATURES

- DC/BLDC motor drive
- Low noise design
- Flexibility for the package
- Smart/Non smart
- High performance & durability

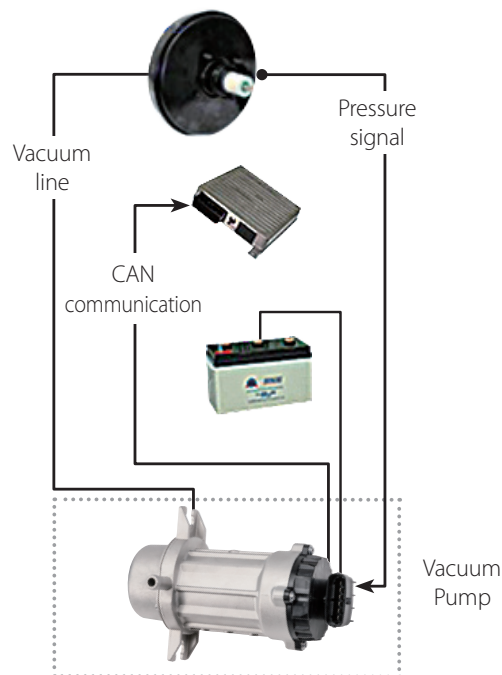


The world leader in providing technology & value

TECHNICAL INFORMATION

	EVP10e	EVP20n
Operating Type	Rotary Type (Intelligent)	Rotary Type (Simple)
Operating Temperature	-40 ~ 120°C	-40 ~ 120°C
Operating Voltage	9 ~ 16V	9 ~ 16V
Nominal Voltage	12V	13V
Max. Output Pressure	-900mbar	-950mbar
Vacuum Performance (@12V)	-500mbar ≤ 5.0s, -700mbar ≤ 10.5s	-500mbar ≤ 3.1s, -700mbar ≤ 6.2s
Test Volume	About 3.2L	About 5.0L
Power Consumption	Max. 15A	Max. 25A
Noise	70dB	75dB
Weight	≤ 1.3kg	≤ 1.6kg
Lubrication	No	No

ELECTRIC VACUUM PUMP EXPRESSION



Kamtec (Korea Air Management Technology)

15, Godeung 2-gil, Nowon-ri, Iwol-myeon,
Jincheon-gun, Chungcheongbuk-do,
Republic of Korea

T 82.31.8047.4495 F 82.31.8047.4499

www.kamtec.co.kr