



HP EGR Valve
LP EGR Valve
EGR Combi Valve
EGR Cooler



Kamtec (Korea Air Management Technology)

15, Godeung 2-gil, Nowon-ri, Iwol-myeon,
Jincheon-gun, Chungcheongbuk-do,
Republic of Korea

T 82.31.8047.4495 F 82.31.8047.4499

www.kamtec.co.kr



The world leader in providing technology & value

HP EGR Valve Gen2



FEATURES

- DC motor drive
- Quick response
- High actuating force

TECHNICAL INFORMATION

- Operating voltage : 10 ~ 16V (Nominal : 13.5V)
- Operating temperature : -40 ~ 150°C
- Response time : 70ms
- Max. operating force : 450N @4.5A
※ Option for Gasoline : 350N @4.5A
- Max flow : 120kg/h @Δp 5kPa
※ Option for Gasoline : 45kg/h @Δp 10kPa

LP Flap Valve



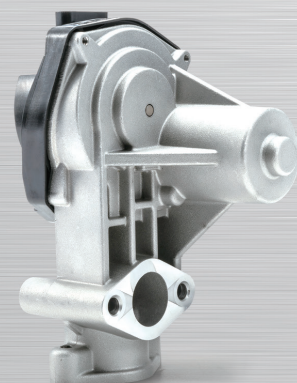
FEATURES

- DC motor drive
- Quick response
- Control unit : Smart
- Control type : CAN, PWM, On/Off (without sensor)

TECHNICAL INFORMATION

- Operating voltage : 9 ~ 16V (Nominal : 13.5V)
- Operating temperature : -40 ~ 150°C
- Response time : 160ms @90°C
- Operating max. torque : 1N·m @5.2A

HP EGR Valve Gen3



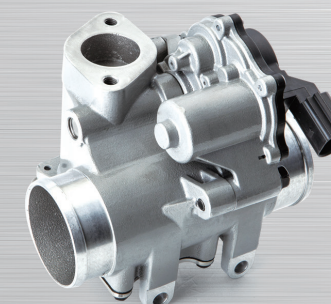
FEATURES

- DC motor drive
- Quick response
- High actuating force
- Lift direct sensing
- Variable flow characteristic

TECHNICAL INFORMATION

- Operating voltage : 10 ~ 16V (Nominal : 13.5V)
- Operating temperature : -40 ~ 150°C
- Response time : 65ms
- Max. Operating force : 300N @4.5A
※ Option for Diesel : 450N @4.5A
- Max flow : 45kg/h @Δp 10kPa
※ Option for Diesel : 120kg/h @Δp 5kPa

EGR Combi Valve



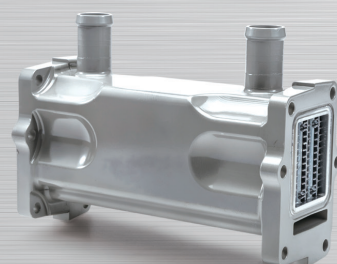
FEATURES

- DC motor drive
- 3way valve
- No air inlet loss at max. air flow

TECHNICAL INFORMATION

- Operating voltage : 9 ~ 16V (Nominal : 13.5V)
- Operating temperature : -40 ~ 150°C
- Response time : 100ms
- Weight : 1.2kg

Aluminum EGR Cooler



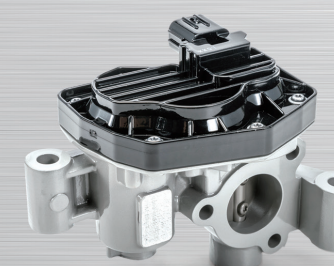
FEATURES

- High thermal conductivity
- Flexible fin design (Minimize fouling effect)
- Aluminum Die Casting

TECHNICAL INFORMATION

- Weight : <1.1kg
- Size : 170 x 74 x 104 (mm)
- Cooling efficiency : 90.5%
(Gas : 500°C, 30kg/h, Coolant : 85°C, 14L/min)

LP EGR Butterfly Valve



FEATURES

- DC motor drive
- Quick response
- Prevention structure of valve sticking

TECHNICAL INFORMATION

- Operating voltage : 9 ~ 16V (Nominal : 13.5V)
- Operating temperature : -40 ~ 150°C
- Response time : 80ms
- Operating max. torque : 2N·m @4.5A
- Max. flow : 180kg/h @Δ5kPa (Valve dia. Φ32)